



CAM & GROOVE COUPLINGS

Aluminum, 316 Stainless Steel, Brass
and Polypropylene



MISSISSAUGA • VANCOUVER • EDMONTON



Part "A"
Male Adapter X
Female NPT



Part "B"
Female Coupler
X Male NPT



Part "C"
Female Coupler X
Hose Shank



Part "D"
Female Coupler
X Female NPT



Part "E"
Male Adapter X
Hose Shank



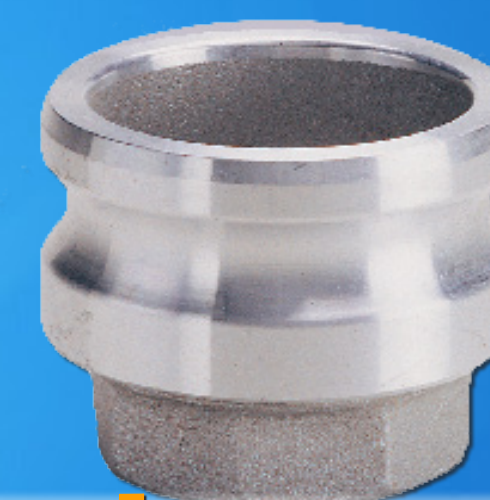
Part "F"
Male Adapter X
Male NPT



Part "DC"
Dust Cap



Part "DP"
Dust Plug



Reducer (A)
Male Adapter X
Female NPT



Reducer (E)
Male Adapter X
Hose Shank



Reducer (C)
Female Coupler
X Hose Shank



Reducer (DA)
Female Coupler
X Male Adapter



Reducer (B)
Female Coupler
X Male NPT



Spool (AA)
Adapter X
Adapter



Spool (DD)
Coupler X
Coupler

Available from 1/2" to 8" in some materials

Reducers and Spool only available in
Aluminum and Stainless Steel