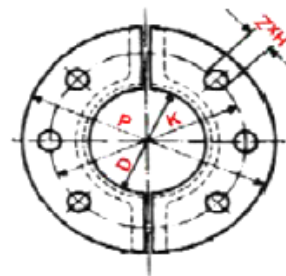
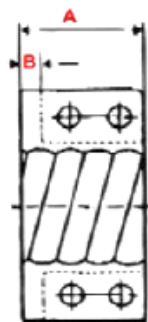
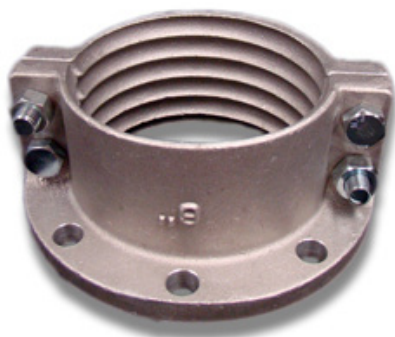


Material Conducting Flanges

ALUMINUM SPLIT FLANGES FOR CMC MAXX HOSE



Parts No.	'D'(in.)	'A'(in.)	'B'(in.)	'K'(in.)	'P'(in.)	'Z'(# of bolts)	'H'(bolt hole ID, in.)	Approx. Weight (lbs)
CMCC-2	2	3-11/32	5/8	4-3/4	6	4	3/4	3.3
CMCC-3	3	3-5/16	5/8	6	7-1/2	4	3/4	4.4
CMCC-4	4	3-5/16	5/8	7-1/2	9	8	3/4	6.6
CMCC-5	5	4-1/8	5/8	8-1/2	10	8	7/8	7.7
CMCC-6	6	4-1/2	1-1/16	9-1/2	11	8	7/8	8.8
CMCC-8	8	5-7/8	3/4	11-3/4	13-1/2	8	7/8	13.2
CMCC-10	10	6-7/8	1-1/8	14-1/4	16	12	1	25.4
CMCC-12	12	7-11/16	1-1/8	17	19	12	1	30.9

Cutting and Installation Instructions



A complete coupling assembly includes:

- One two-piece aluminum alloy coupling with full-face integral flange drilled to ASA 150 on both halves.
- One pure gum gasket.
- Four or six cadmium plated steel bolts with hex nuts and washers

Cutting hose to length

Lay out and mark the length of hose required. Using only two bolts, temporarily install the coupling for use as a cutting guide.

Cut the hose with a knife or saw while wetting the cutting area with water.

The rubber and fabric portions of the hose are separated by pulling on the cut to make the helix accessible.

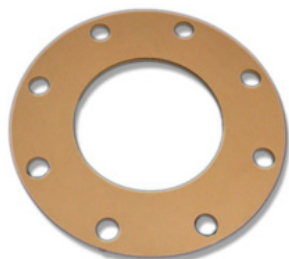
Cut the wire helix at the hose edge with wire cutters or a hack-saw.

Installing the coupling:

Cross-tighten the bolts progressively, keeping the gap between the coupling halves as even as possible. Maintain this by pressing both hose ends against the seal.

Continue tightening until no gap remains between the coupling halves.

Install the gasket in the hose end, being careful to apply only as much force as required, to avoid damaging the gasket.



EXTERNAL SPLIT FLANGE GASKETS

Made from 1/4" Pure Gum rubber.
Available in sizes 2" to 12"
Part number: CMCG-size